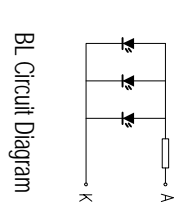
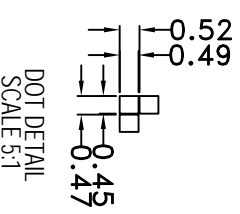
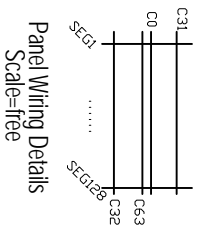
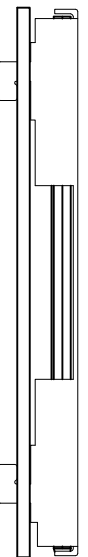


No.	Pin Name
1	3.3V
2	CS LCD
3	SDA
4	RS
5	SCIK
6	RST
7	CS Font
8	SO
9	NC
10	GND
11	BLA
12	BLK



*1. LCD Display Type	STN-BLUE, Transmissive, Negative
*2. Viewing Direction	6H
*3. LCD Driver Mode	1/64Duty, 1/9Bias
*4. Operating Voltage	3.3V
*5. Operating Temp	-20°C~70°C
*6. Storage Temp	-30°C~80°C
*7. Driver IC	ST7567/GT32L32S0140
*8. Backlight	WHITE VF=3.0V If=45mA
*9. ROHS	

HOT DISPLAY

Dwg Title: HTM12864-123-25V-A3S-V01	
EDC No:	Ver: A/0
Scale: 1:1	Unit: mm
Drawn:	Tol: ±0.3
Checked:	Date: 2022-09-15