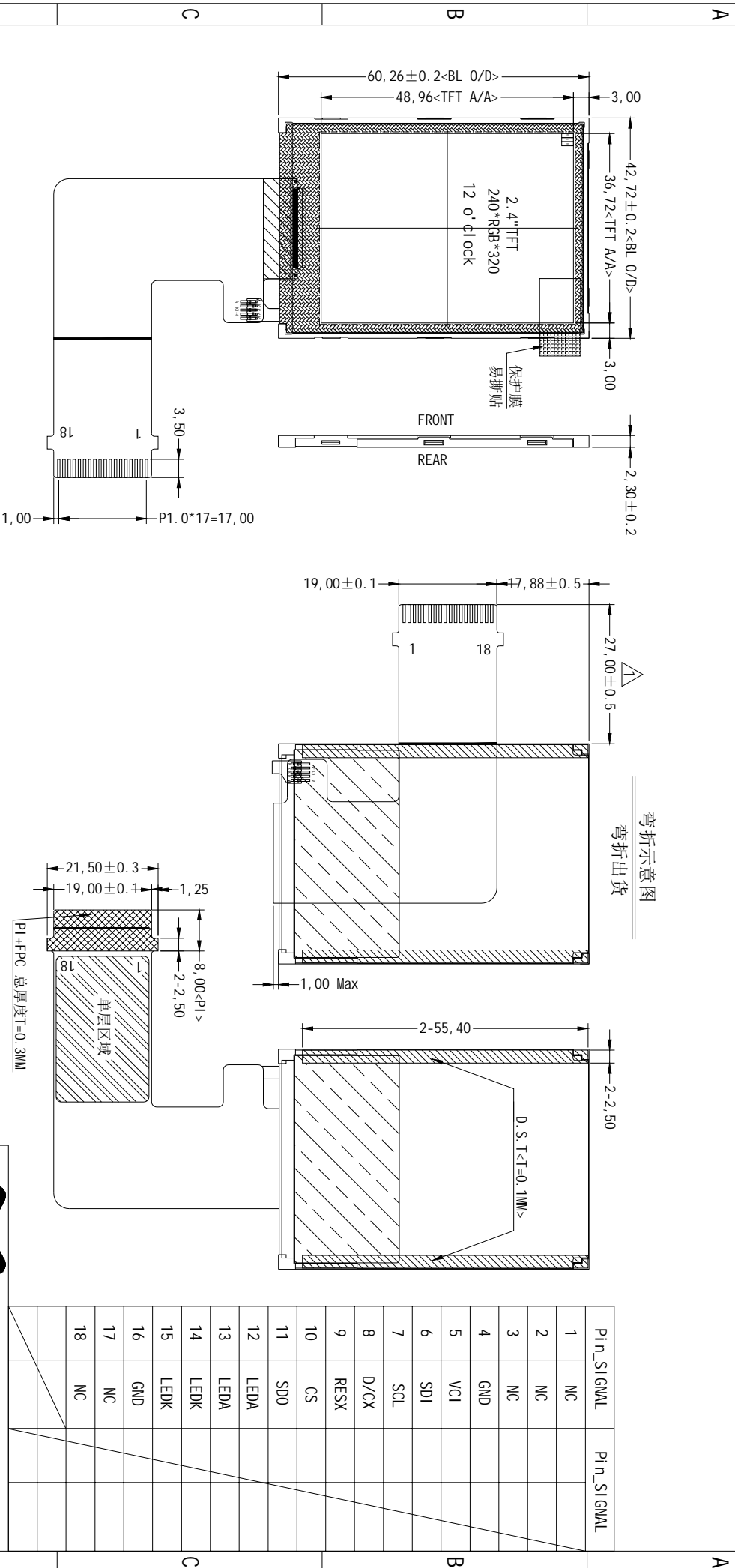
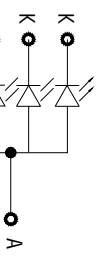


*** Do not display the fixed pattern for a long time when using a normally black panel, as it may cause image sticking due to the LCM structure. If the screen is displayed in fixed mode, use a screen saver. It is recommended to display the fixed mode in less than 2 minutes or less.

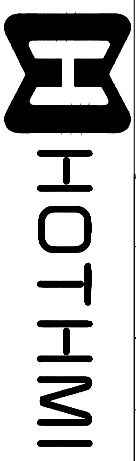


Model: 42.00 to 27.00 MM

Item	Parameter	Value
*1.	Display Type	TFT, Transmissive, Normally White
*2.	Viewing Direction	12 o'clock (U45/D20/R45/L45)
*3.	Interface	SPI 4L
*4.	Operating Voltage	VCI=3.3V, IONCC=1.8V (Typ)
*5.	Operating Temp	-20° C ~ 70° C
*6.	Storage Temp	-30° C ~ 80° C
*7.	Driver IC	S17789V2
*8.	Backlight	WHITE VF=3.2V, IF=80mA (Typ)
*9.	LCM Brightness	250 cd/m² (Typ)



BL CIRCUIT DIAGRAM:
VF=3.2V, IF=80mA



Part Number: TFT-H024C80VTST2N18

Scale	1:1	Unit	MM	Tol.	±0.3
Ver.	V1	Drawn	Liu	Date	2020-04-10